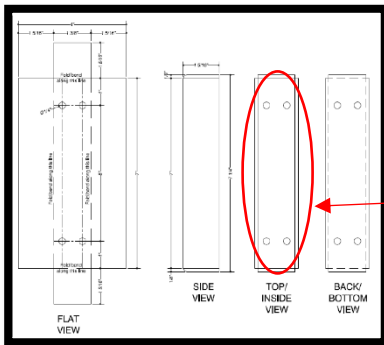


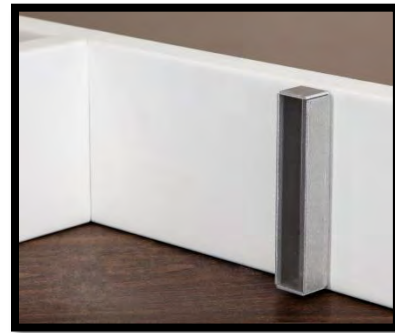
Note: Your product has been shipped with the hardware and manufactured parts to complete the following steps. If you feel parts and/or hardware is missing please contact a sales representative at 1-800-930-7495

Step 1: Start by making sure all manufactured parts are accounted for in the custom wood crate. A representation of all manufactured parts can be found on either the Order/Acceptance Form or the production ready drawing.

Step 2: Locate the ledger board, this will be the first manufactured part installed to the pre-existing structure. The ledger board contains pre-installed “flush mount brackets” for the attachment process of the rafters (step 3). Utilizing the installers provided hardware secure the ledger board to pre-existing structure, by way of the four internal holes within the flush mount brackets.

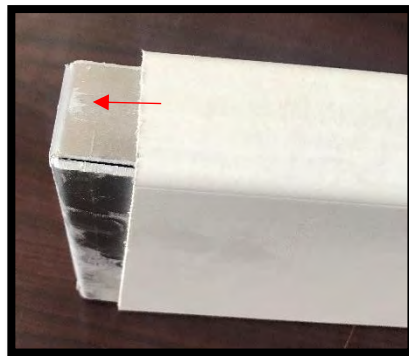
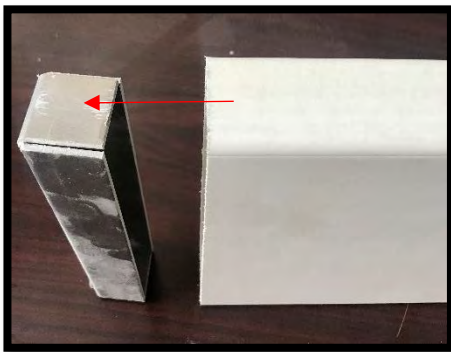


Utilizing the hardware provided by the installer, mount the ledger board to the pre-existing structure by way of the four holes within the flush mount bracket



(*Note: ArborsDirect[®] does not supply nor is responsible for the attachment hardware of the ledger board to the pre-existing structure)

Step 3: Now that the ledger board is attached, locate the nominal 2” x 8” rafter beams. The overall length of the trellis/eyebrow will determine the quantity of the rafter parts. However, to be certain you have received the right amount of rafters, there should be an equal amount of flush mount brackets on the ledger board for every rafter provided. Slide the open (non-filled) rafter end over the flush mount bracket.



Step 4: Within the hardware provided, there are one of two ways to secure the rafters to the flush mount brackets. Utilizing either the 3/4” hex head stainless steel screws or the pop rivets (preferred), screw in or pop rivet the rafter to the flush mount bracket. (4 per rafter / 2 on each side)



Step 5: After the rafters are secured to the ledger board via the flush mount brackets, it is time to attach the nominal 2" x 2" purlin. Our manufacturing team has marked the top of the rafters where the purlin are equally spaced (reference drawings for exact measurements). Utilizing the provided 2.5" stainless steel self-tapping purlin screws, secure the purlin to the top of each rafter, drilling the screw down through the purlin into the top of the rafter.



Step 6: Your trellis/eyebrow installation is complete. Final touch ups can be made with the provided quart of paint. Again, if you have any further questions or concerns regarding the completed steps, please feel free to contact us at 1-800-930-7495!

Thank you for your business!

